

unleash

KNOWING

CONNECTING

IMPACTING

A publication of Northeast Christian Church

10:10 NEWS

Living the Abundant Life

JANUARY • FEBRUARY • MARCH

2008

"...I HAVE COME THAT THEY MAY
HAVE LIFE, AND THAT THEY MAY
HAVE IT MORE ABUNDANTLY."

JOHN 10:10

NORTHEAST
CHRISTIAN CHURCH
www.necchurch.org



HAPPY NEW YEAR



Dear Northeast Friends,

I've been saying for a couple of years now that the best days of Northeast are ahead of us. And now I think they are right upon us! Over the next several weeks you'll be hearing about a spiritual journey that we are about to take together.

With the beginning of our **unleash** campaign, we are asking for our congregation to partner with God and each other in a defining moment for Northeast, ourselves and those who don't yet know Christ.

If you are new to Northeast what a special time to join us! This is as about as exciting a time at Northeast as it has ever been!

As Christians, we're promised the good life here on earth . . . the Abundant Life. Let's live it and **unleash** it starting now!

Bob Cherry
Senior Pastor

Our Mission:

"To team with God in helping people discover and experience the Abundant Life."

INSIDE

- unleash ●●●●●●●●●● 3
- abundant life ●●●● 4-9
- youth ministries ●●●●● 10
- staff ●●●●●●●●●● 11
- calendar of events ●● 12



unleash



...the spirit...the church...the power...the people...us to become all that You want us to become!

main events

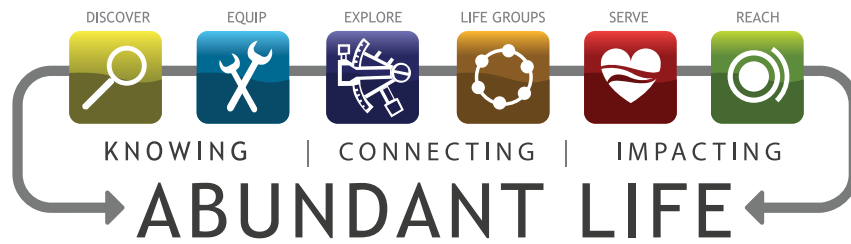
January 5 & 6 – February 16 & 17
CAMPAIGN LAUNCH & SERMON SERIES

January 15 – February 24
40 DAYS OF PRAYER

February 16 & 17
PRAYER JOURNEY

February 17
LEADERSHIP COMMITMENT EVENT

February 23 & 24
CELEBRATION EVENT & FIRST FRUITS OFFERING



discover

If you are new to Northeast, **START HERE!** Ask questions and get to know God. The next Knowing God/ Knowing Northeast class is Sunday, January 20, 2008 at 10:30 am. Register online at www.necchurch.org.

equip

This is where you get equipped to know God more through Bible studies, lifeskills classes and retreats. Visit www.necchurch.org for a complete listing of equipping experiences.

explore

If you have been through the Knowing God/Knowing Northeast Class and want to get connected with others, contact Katie at 212.5246 or katie.haller@necchurch.org to join an Explore Group!

life groups

Real friends. Real faith. Real fun. If you are not in a Life Group yet, you can see a complete listing of groups at www.necchurch.org and get connected!

serve

Impact someone's world by serving others in the community (X-focused ministries). See a complete listing of serving opportunities at www.necchurch.org.

reach

Impact unbelieving friends and family. If you are in a Life Group and want to learn how to reach others, visit www.necchurch.org and make an impact!

KNOWING



We encourage you to take the next step in living the Abundant Life that God has promised you!
MAKE YOUR NOT-SO-OKAY DAYS GREAT AND YOUR GOOD DAYS AWESOME!

discover

How to become a member?

Why do we believe what we do?

The primary step in the Discover phase is the "Knowing God/Knowing Northeast" class. This class gives you information on what Northeast is all about, becoming a member, what it means to have a relationship with Jesus Christ, information on baptism and outlines the Abundant Life process.

THE NEXT CLASS IS SUNDAY, JANUARY 20TH AT 10:30 AM.

Register at the Knowing booth in the foyer or online at www.necchurch.org.

More information is available on a DVD entitled, "Who We Are/Where You Are." Pick-up yours at Guest Services in the foyer or view it online at www.necchurch.org

SO FAR IN 2007:

- 141 baptisms
- 211 new members
- 196 people attended Knowing God/ Knowing Northeast Class



Randy Gordon
Discover Minister
 212.5250
randy.gordon@necchurch.org

NEW MEMBERS WHO HAVE JOINED SINCE OCTOBER 2007!

- | | |
|---------------------|------------------|
| Joe Arnold | Madison Haller |
| Susan Arnold | Jeff Harding |
| Geoffrey Bardon | Dan Kanabroski |
| Janelle Bardon | Debbie Kremer |
| Erik Bergman | Mandi Lynton |
| Kirsten Bergman | Brandson Mann |
| Taylor Bieschke | Erin Mann |
| Chris Booth | Kristian Onan |
| Mauri Booth | Kyle Onan |
| Kay Cash | Jordan Ottman |
| Scott Childress | Meredith Ottman |
| Stephanie Childress | Jim Rovenski |
| Davis Church | Alli Sipes |
| Katelynn Creak | Christy Sipes |
| Mariah Creak | Judy Smith |
| Dee DeMuth | Emilie Stivers |
| Mark Doll | Jeff Stivers |
| Erik Eckel | Steve Terry |
| Lauren Eckel | Suzanne Terry |
| Steve Farris | Lisa Warner |
| Linda Filippini | Michael Warner |
| Brooks Finneseth | McKenna Williams |
| Ginger Finneseth | Christie Witten |
| | Darryl Witten |



KNOWING

equip

Start 2008 off right with an "Equip" class from Northeast! A lot of classes start in January and we're constantly updating the list so please check the bulletin, Knowing booth in the foyer or visit www.necchurch.org for the most up-to-date class listing!

2008 Bible Studies & Classes

BAPTISM CLASS FOR ADULTS – BAPTISM BASICS
BAPTISM CLASS FOR HIGH SCHOOL STUDENTS
BAPTISM CLASS FOR MIDDLE SCHOOL STUDENTS
BAPTISM CLASS FOR 3RD-5TH GRADES (BEYOND BELIEF)

BREAKING FREE
CASE FOR THE REAL JESUS
DISCERNING THE VOICE OF GOD
END TIMES
EZEKIEL/ESTHER SUNDAY, EZEKIEL

FINANCIAL PEACE UNIVERSITY
GOD WILL MAKE A WAY
GOOD TO GREAT IN GOD'S EYES

GROWING UP CATHOLIC
HOW TO STUDY (9:15 AM)
HOW TO STUDY (11:00 AM)

I OBJECT
I SAW THE LORD
JEREMIAH (MEN ONLY)
JESUS THE ONE AND ONLY

MOM'S ORDINARY DAY - WINNING OVER WORRY
PARENT TO PARENT – LESSONS LEARNED

II SAMUEL/I KINGS
SEEKING HIM
STEPPING UP–JOURNEY THROUGH PSALMS-AM
STEPPING UP–JOURNEY THROUGH PSALMS-PM

STUDY OF JOHN
THE CONFIDENT WOMAN

Sunday, 1/27 ~ 11:00 am (FREE)
Sunday, 1/13, 3/16 & 5/11 ~ 9:15 am (FREE)
Sunday, 1/13, 3/16 & 5/11 ~ 11:00 am (FREE)
Sunday, 3 weeks beginning 2/3 & 5/4 ~ 10:30 am(FREE)
Thursdays, 1/24 ~ 9:30 am (\$16)
Sundays, 1/27 ~ 11:00 am (\$17)
Tuesdays, 1/29 ~ 9:30 am (\$12)
Sunday, Weekly ~ 10:30 am (FREE)
Sundays, Weekly ~ 9:15 am (FREE)
Tuesdays, 1/8 ~ 6:30 pm (\$69)
Tuesdays, 1/22 ~ 6:30 pm (\$13)
Tuesdays, 1/22 ~ 6:30 pm (\$14)
Sundays, 1/27 ~ 9:15 am (FREE)
Sundays, 4/27 ~ 9:15 am (FREE)
Sundays, 3/2 ~ 11:00 am (FREE)
Sunday, 1/27 ~ 9:15 am (FREE)
Thursdays, 1/31 ~ 6:30 pm (\$11)
Saturday, 2/9 ~ 7:30 am (FREE)
Thursdays, beginning 1/24 ~ 9:30 am (\$16)
MEN'S FRATERNITY Wednesdays, 1/9 ~ 6:00 am (\$10)
Wednesdays, 1/30 ~ 9:30 am (\$10)
Wednesdays, 1/23 ~ 6:30 pm (\$12)
Sundays, 9:15 am (FREE)
Tuesdays, 1/29 ~ 9:30 am (\$20)
Tuesdays, 1/29 ~ 9:30 am (\$14)
Wednesdays, 1/30 ~ 6:30 pm (\$14)
Sundays, 4/27 ~ 9:15 am (FREE)
Wednesdays, February 13 ~ 11:45 am (\$13)



Laura Wingfield **Rosemarie Arsenault**
Equip Minister *Ministry Coordinator*
212.5247 212.5248
laura.wingfield@necchurch.org rosemarie.arsenault@necchurch.org

2008 BRIDGES CLASSES

BRIDGES is a weekly program of groups connecting people with others walking the same path. These groups provide encouragement and direction through support, biblically based studies and accountability.

SUNDAY MORNINGS, 11:00 am ~THE HEALING PATH, Starts Sunday, January 12 (\$9)

None of us can escape the heartache and disappointments of life. If we fail to respond appropriately to these wounds, our pain will be wasted; it will numb us or destroy us. If you're ready to shape a future characterized by love and joy this is the class for you.

TUESDAY EVENINGS, 6:30 pm ~ GOD WILL MAKE A WAY (women only), Starts Tuesday, Jan. 15 (\$13)

We all have times when we feel lost, hurt and find ourselves asking "where is God in all of this?" In this class, eight fascinating and persuasive principles are taught that demonstrate how God enters both the heart-breaking situation and the life looking for more.

BOUNDARIES, Starts Tuesday, January 15 (\$10)

When do you say yes and when to say no? How can you take control of your life? Discover firsthand how healthy boundaries give you the freedom to walk as the loving, giving, fulfilled individual God created you to be.

THURSDAY EVENINGS, 6:30 pm ~ A SPIRITUAL JOURNEY TO HEALING, Starts Thursday, Jan. 10 (\$12)

This twelve-step program guides people who are experiencing brokenness. It is a journey that leads you to knowing and depending upon God and experiencing lasting change and healing that He alone can give.

DIVORCECARE, Starts Thursday, January 10 (\$12)

DivorceCare is a friendly, caring group of people who will walk alongside you through one of life's most difficult experiences. DivorceCare seminars and support groups are led by people who understand what you are going through and want to help.

YOU MATTER MORE THAN YOU THINK (women), Starts Thursday, January 17 (\$13)

Ladies have you ever struggled with, "Do I matter?" "Do I really make any difference?" If you have you are not alone. Once you've looked at your quirks, gifts, pains and wishes through God's eyes, you can discover that you matter more than you think.



Joe Arnold
Counseling Minister
212.0432
joe.arnold@necchurch.org

Lora Mercurio
Counseling Administrative Assistant
212.1652
lora.mercurio@necchurch.org

CONNECTING

explore

Since the beginning of

the Explore Group Ministry, our primary goal has been to encourage our members to fully engage in the Abundant Life by joining a 5-week Explore Group (a chance to “kick the tires” of group life). However, we recognize an Explore Group may not be the “next best step” for everyone.

So, we also encourage participation in the many other Abundant Life opportunities offered through Knowing and Impacting. Since the inception of our ministry, 90% of those becoming members of Northeast Christian Church since 2006 have engaged in one or more areas of the Abundant Life! Awesome!!



OUR NEXT EXPLORE GROUP IS WEDNESDAY, FEBRUARY 13 AT 6:30PM. SIGN-UP AT THE CONNECTING BOOTH IN THE FOYER OR ONLINE AT WWW.NECCHURCH.ORG.

Since 2006...

- 35 Explore Groups
- 264 people joined Explore Groups
- Over 65% going on to join Life Groups!



Diedre Wade
Ministry Coordinator
212.5240
diedre.wade@necchurch.org



Mike Mack
Life Groups Minister
212.5241
mike.mack@necchurch.org



Katie Haller
Explore Director
212.5246
katie.haller@necchurch.org

CONNECTING

life groups



Resolve to Get Connected! *New Life Groups for a New You in the New Year!*

It is essential to your faith to be connected in a small circle of friends focused on **Knowing God and Impacting Your World**. Life Groups are life-giving and life-changing! They are a place to fully experience the Abundant Life.

Northeast presently has more than 100 Life Groups for you to choose from and we are constantly starting new ones. This January we are launching a wide variety of new groups.

Some examples of groups include:

- Two new groups for college students
- A group for older active adults
- Single moms
- Couples and family groups
- Outdoorsmen (hunting and fishing)
- A new group in Briar Hill
- Groups that are diverse in their makeup (singles, couples, men, women, etc.)

For more information on these groups, stop by the Connect booth in our church foyer or contact Diedre Wade: 212-5240 or diedre.wade@necchurch.org.

Don't see a group that interests you? Then start your own! Life Group Leaders are average, ordinary members of Northeast who God uses to do extraordinary things!

Starting a new group is not difficult.

The Life Group Ministry provides great training, support, and resources. If you are interested in learning more about starting a group, attend a half-hour "Investigating Life Group Leadership" class. Choose between Saturday, January 26, 6:15PM or Sunday, January 27, 10:25AM. Contact Life Group Minister, Mike Mack for more information at 212-5241 or mike.mack@necchurch.org.

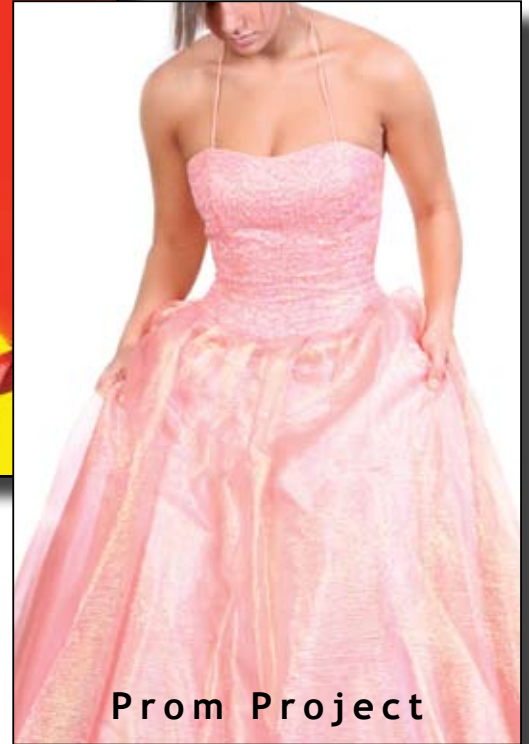


IMPACTING

serve



Balloon Angels



Prom Project

X-Focused Ministry Spotlight

From January to March the Impacting team will spotlight two of our Externally Focused Ministries each weekend in the foyer. A core piece of the Abundant Life process is impacting our community through reaching out to our community by serving within it and that is precisely what each of these ministries do!

Please be sure to take a moment to learn about each ministry's vision, history, and most importantly, how you may be able to support it so they can continue to impact someone's world!

Here's the schedule of the X-Focused Ministry Spotlight:

- 1/19 - 1/27: Prom Project ~ PB&J
- 2/9 - 2/17: Blankets of Love ~ Balloon Angels
- 3/1 - 3/9: Heart Hats ~ Trikes for Tikes
- 3/22 - 3/30: Comfort Blankets ~ Mom's Closet

PROM PROJECT expresses God's love to high school girls, and their families- who lack financial resources, by fulfilling their dreams of attending prom through the gift of a gown.



P B & J

PB&J serves the homeless population of metropolitan Louisville by providing meals, clothing and supplies.

BLANKETS OF LOVE partners with community organizations (like Salvation Army) and gives the gifts of crocheted blankets to families/individuals.

BALLOON ANGELS provides free helium filled Mylar balloons to hospitalized, ill or injured children in our community to help make their stay in the hospital a little brighter.

HEART HATS provides the gift of a hat for female cancer patients that have lost their hair due to cancer treatments.

TRIKES FOR TIKES teams up with members of Northeast as well as with other community partners to share the love of Christ through the gift of a bike, Bible, helmet and cross.

COMFORT BLANKETS makes fleece blankets that are given as gifts to any patient staying three or more days at Norton Suburban as a gift from the hospital and Northeast.

MOM'S CLOSET is dedicated to developing the potential of single mothers in the state of Kentucky through encouragement, education and by setting a good example, with a Christian view point.



IMPACTING

Trikes for Tikes Gives Bikes To Extreme Home Makeover Family

By now everyone probably knows that the ABC television show *Extreme Makeover: Home Edition* with host Ty Pennington, provided Patrick Hughes, a 19-year-old U of L Marching Band member and his family a new home this past fall. What some of you may not know is that Northeast's own Trikes for Tikes ministry was fortunate to play a role in this event!

A couple of days after the public announcement that *Extreme Makeover: Home Edition* had selected a family in Louisville, the Trikes for Tikes ministry began talks of how they could play a role. Trikes for Tikes agreed that with Patrick's physical limitations, even an exercise bike would not be appropriate for him, but decided to provide bikes for his brothers Jesse (16) and Cameron (12).



Jana Miller with Jesse and Cameron Hughes

Jana Miller and Erik Eckel, members of the Trikes for Tikes ministry, were invited to attend the press conference for the Hughes family to present the bikes. Patrick and Patricia Hughes, the proud parents, extended their gratitude and sincere appreciation to Jana and Erik. Jesse and Cameron were very excited to be included.

Jana shared, "As I volunteered the last night before the home reveal, I was talking with one of the contracting employees about how amazing the whole week had been and how it had renewed my faith in the goodness of mankind. He said something in response that just summed it up. He said, 'I think this is as close to heaven on earth as we will ever get, people working selflessly for the good of strangers.'"



Northeast men's softball team

Northeast Men's Softball Team Goes to Prison

Brian Scully has been going to prison every Tuesday night for "fishing opportunities" by getting to know some of the men and sharing his faith. Thanks to him, there are now more men from Northeast going to bat for Jesus!

In 2006, the Northeast men's softball team worked its way through the doors of the Luther Luckett Correctional Complex in LaGrange which houses 1,039 inmates, all secured by a 14 foot high fence with electronic sensors topped by razor wire.

They invited some of the inmates in the complex to play ball! On the way to the field, the Northeast team had to "walk the block" and received a little heckling, but mostly with traditional challenges to "bring your 'A' game."

For the inmates who played it was a privilege they received so they were grateful and polite. The Northeast men invited the inmate players to join them in prayer – and they obliged. There were also about 50 inmate spectators who got to witness lifestyle evangelism! Way to go guys!

Spring sign-ups are just around the corner! reach



Andrea Culliton
Ministry Coordinator
212.5237
andrea.culliton@necchurch.org



Jacque Reynolds
Benevolence Coordinator
212.5220
jacquereynolds@necchurch.org

youth ministries



Look for the Middle School Spring Calendar - lots of fun events & activities.....coming soon!!

Mission Trip (*New Orleans*) April 6 - 12

Join us as we take a team to New Orleans to help rebuild existing homes and build new homes for those devastated by Hurricane Katrina. For more information, attend the parent information meeting on Sunday, January 13 at 12:15 immediately following the 11:00 service in the gym. For additional details, contact Tom Black at 435-4054 or jtbiv@bellsouth.net.

High School Calendar of Events

Sunday, January 13 ~ 12:15 pm in the gym
Parent information meeting for summer and mission trip
Sunday, January 20 ~ 7:00-11:00 pm
Fellowship night out for high school guys and girls
Sunday, January 27 ~ 7:00-8:30 pm in the gym
Life groups spring semester kick off
Sunday, February 17 ~ Lock-in

2008-2009 NORTHEAST PARENT'S DAY OUT

Parent's Day Out will begin accepting registrations for the 2008-2009 school year from Northeast members and current participants beginning January 15th. Registrations will be open to the public February 15th. Parent's Day Out is offered for children 4 months through preschool on Tuesday and Thursdays from 9-12. Our preschool program's curriculum includes weekly themes, Bible Story, large motor skills, basic learning concepts, crafts and much more!! Daily cost is \$18, and the annual registration fee is \$50. Contact Lauri Pytko @ lauri.pytko@necchurch.org or 426-9980 ext 644.

High School Life Groups

Join us for the spring semester of Life Groups beginning Sunday, January 20 at 7:00 pm. During this time we study the Bible, create deeper relationships with our groups, and have a whole lot of fun. If you are interested in joining us, you can register online at www.necchurch.org or you can contact Barbara Landgrave at 212-5228 or Matt McFarren at 212-5238.

Summer Trip ~ July 6 - 11 (*Student Life at the Beach*)

It's not your basic camp. It's a conference-style event that meets the needs of a summer retreat. With worship and plenty of group time, your students will not only be challenged in their Christian journeys, but they will also enjoy all the benefits of being at the beach for a week! Student Life at the Beach includes morning celebration and evening worship led by Chris Tomlin, while enjoying lots of free time in the afternoons to enjoy the beach!

For more information, attend the parent information meeting on Sunday, January 13 at 12:15 immediately following the 11:00 service in the gym. For additional details, contact Tom Black at 435-4054 or jtbiv@bellsouth.net.



High School Annual Senior Trip ~ July 11 - 15

This year it's going to be a little bit different! First, we will do a week at Student Life at the Beach in Daytona, Florida. This is an awesome week of teaching, music, hanging out and having fun. It's going to be a blast!! But this year, instead of coming back on the bus, the seniors will be loading up some vans and driving to Cocoa Beach and Orlando. We are going to spend an extra 4 days in Florida. We will be staying at some very nice hotels and experiencing a little of everything in Florida from theme parks to Florida beaches to maybe a little shopping for the ladies and many other things. Don't miss it!!!

staff

Joe Arnold	<i>Counseling Minister</i>	212.0432	joe.arnold@necchurch.org
Rosemarie Arsenault	<i>Ministry Coordinator</i>	212.5248	rosemarie.arsenault@necchurch.org
Deana Black	<i>Administrative Assistant</i>	212.5234	deana.black@necchurch.org
Chris Booth	<i>Children's Minister</i>	212.5211	chris.booth@necchurch.org
Liz Bremner	<i>Graphic Designer</i>	212.5239	liz.bremner@necchurch.org
Tamara Campbell	<i>Pre-School Director</i>	212.5233	tamara.campbell@necchurch.org
Tony Cansler	<i>Accountant</i>	212.5204	tony.cansler@necchurch.org
Bob Cherry	<i>Senior Pastor</i>	212.5206	shawna.donahue@necchurch.org
Vicki Cherry	<i>Minister of Creative Arts</i>	212.5229	vicki.cherry@necchurch.org
Jay Close	<i>Pastoral Care Minister</i>	212.5209	jay.close@necchurch.org
Torie Combest	<i>Administrative Assistant</i>	212.5221	torie.combest@necchurch.org
Ronnie Cordrey	<i>Interim Teaching Pastor</i>	212.5242	ronnie.cordrey@necchurch.org
Christi Cowgill	<i>Nursery Director</i>	212.5224	christi.cowgill@necchurch.org
Andrea Culliton	<i>Ministry Coordinator</i>	212.5237	andrea.culliton@necchurch.org
Steve Davis	<i>Campus Operations Staff</i>	426.6668	
Jordan Donahue	<i>Campus Operations Staff</i>	426.6668	
Shawna Donahue	<i>Senior Pastor Assistant</i>	212.5206	shawna.donahue@necchurch.org
Debbie Eden	<i>Campus Operations Staff</i>	426.6668	
Cary Frame	<i>Business Administrator</i>	212.5201	cary.frame@necchurch.org
Beverly Gillespie	<i>Receptionist</i>	426.6668	receptionist@necchurch.org
Geoff Gittli	<i>Director of Audio Ministries</i>	212.5226	geoff.gittli@necchurch.org
Randy Gordon	<i>Discover Minister</i>	212.5250	randy.gordon@necchurch.org
Katie Haller	<i>Explore Director</i>	212.5246	katie.haller@necchurch.org
Donna Jones	<i>Campus Operations Staff</i>	426.6668	
Rhonda Lamb-Laguna	<i>Human Resources Administrator</i>	212.5212	rhonda.lamb@necchurch.org
Barbara Landgrave	<i>Student Ministries Assistant</i>	212.5228	barbara.landgrave@necchurch.org
Kevin Landgrave	<i>Music Minister</i>	426.6668	kevin.landgrave@necchurch.org
Jim Larimore	<i>Campus Operations Director</i>	212.1649	jim.larimore@necchurch.org
Mike Mack	<i>Life Groups Minister</i>	212.5241	mike.mack@necchurch.org
Melody Mathews	<i>Marketing Director</i>	212.5231	melody.mathews@necchurch.org
Matt McFarren	<i>High School Minister</i>	212.5238	matt.mcfarren@necchurch.org
Lora Mercurio	<i>Counseling Administrative Assistant</i>	212.1652	lora.mercurio@necchurch.org
Lisa Middleton	<i>Student Ministries Assistant</i>	212.5227	lisa.middleton@necchurch.org
Mark Nichols	<i>Transition & Research Leader</i>	212.5205	mark.nichols@necchurch.org
James Niedermyer	<i>Campus Operations Staff</i>	426.6668	
Mary Ann Owens	<i>Campus Operations Staff</i>	426.6668	
Adam Peterson	<i>Student Ministries Tech</i>	212.5235	adam.peterson@necchurch.org
Debbie Pierce	<i>First Impressions Leader</i>	212.5249	debbie.pierec@necchurch.org
Lauri Pytko	<i>Childcare Coordinator</i>	426.6668	lauri.pytko@necchurch.org
Jacque Reynolds	<i>Benevolence Coordinator</i>	212.5220	jacque.reynolds@necchurch.org
Tari Reynolds	<i>Data Administrator</i>	212.5243	tari.reynolds@necchurch.org
Dave Rupp	<i>Information Technologies Director</i>	212.5219	dave.rupp@necchurch.org
Steve Scott	<i>Staff Administrator</i>	212.5245	steve.scott@necchurch.org
Jason Shreve	<i>Creative Media & Lighting Director</i>	212.5230	jason.shreve@necchurch.org
Ben Sullivan	<i>Student Worship Leader</i>	426.6668	ben.sullivan@necchurch.org
Diedre Wade	<i>Ministry Coordinator</i>	212.5240	diedre.wade@necchurch.org
Abby Wilder	<i>Student Programming Minister</i>	212.5236	abby.wilder@necchurch.org
Laura Wingfield	<i>Equip Minister</i>	212.5247	laura.wingfield@necchurch.org
Jennifer Wood	<i>Accountant</i>	212.5204	jennifer.wood@necchurch.org
Jon Wren	<i>Middle School Minister</i>	212.5232	jon.wren@necchurch.org

For a complete listing of staff, including photos, please visit www.necchurch.org.

calendar of events

JANUARY For an up-to-date listing of all Northeast events, please visit www.necchurch.org

5/6 **unleash** campaign launch & sermon series, continuing thru February 16/17

4/6 Middle School Winter retreat - Country Lake Camp

8 Heart Hats Meeting 7:00pm - 9:00pm

9 Explore Group 6:30pm - 8:00pm

10 BRIDGES - Divorce Care & Spiritual Journey to Healing starts

11 Memory Keepers (Scrapbooking) 3:00pm - 10:00pm

12 BRIDGES - The Healing Path starts 11:00am

13 Life Group Basic Training 10:30am - 12:15pm

Middle School Baptism Class 11:00am - 12:00pm

High School parent meeting for summer/mission trips - 12:15pm

14 Spanish Level 2 Course 6:00pm-8:00pm

15 **unleash** 40 Days of Prayer thru February 24

Discerning the Voice of God 9:30am - 11:30am

God Will Make a Way - 6:30pm - 8:00pm

BRIDGES - God Will Make A Way & Boundaries start

16 Life Group Basic Training 6:30pm - 8:00pm

Fasting (class) - 6:30pm - 8:00pm

17 BRIDGES - You Matter More Than You Think

20 Knowing God/Knowing Northeast Christian Church (class)- 10:45am - 12:15pm

BirthJoy Childbirth Classes 6:00pm - 8:30pm

High School night out for guys and girls - 7:00pm - 11:00pm

22 Good to Great in God's Eyes 6:30pm - 8:00pm

23 Middle School Life Groups 6:30pm - 8:30pm

Parent to Parent (class/Wednesdays thru March 5)-6:30pm - 8:00pm

24 Breaking Free - 9:30am - 11:30am

Jesus the One and Only (class/Thursday's thru April 3rd) - 9:30am - 11:30am

26 International Adoption Informational Seminar - 10:00am

27 I Object - 9:15am - 10:15am

7 Steps - 9:15am - 10:15am

Growing Up Catholic - 9:15am-10:15am

Baptism Basics - 11:00am - 12:00pm

High School Life Groups spring semester kick-off - 7:00pm - 8:30pm

29 Seeking Him - 9:30am - 11:30am

Psalms - 9:30am - 11:30am

Discerning the Voice of God 9:30am - 11:30am

30 Middle School Life Groups 6:30pm - 8:30pm

Psalms - 6:30pm - 8:00pm

31 I Saw the Lord - 6:30pm - 8:00pm

FEBRUARY

3 Beyond Belief - 11:00am (Elementary Baptism Class)

8 Memory Keepers (Scrapbooking) 3:00pm - 10:00pm

12 Heart Hats Meeting 7:00pm - 9:00pm

13 Explore Group - 6:30pm - 8:00 pm

16 **unleash** Prayer Journey

17 **unleash** Leadership Commitment Event

High School Lock-in

23 International Adoption Informational Seminar - 10:00am

23/24 **unleash** Celebration Event

MARCH

2 Elevate Youth Basketball & Cheerleading Celebration & Awards Night - 6:00pm

7/8 Prom Project

11 Heart Hats Meeting 7:00pm - 9:00pm

13 Easter

Three identical services!

Saturdays 5:00pm and Sundays 9:15am & 11:00am

Northeast Staff Offices: **13309 Magisterial Drive, Louisville, KY 40223**